



ERASMUS+

Delivering 3 in One Stroke

-

**Supporting student mobility,
Automatic recognition and
Learning mobility statistics**



ERASMUS+

EMREX

-

Field trial on the impact of enabling easy mobility on recognition of external studies



EMREX prehistory

- Collaboration between some of the nordic countries (Finland, Sweden, Norway and Denmark) began in 2006.





ERASMUS+

Nordic glossary and Nordic hub

Term	Term (MLO/ELM)	EN translation/ description	N	DK	SV SE	FIN
Combination rule ("Rule")		Rule governing what is allowed or accepted regarding combination of learning opportunities taken by a learner. Example module A can only be taken after successful completion of module B, and must be studied in conjunction with module C.	Forkunnskapskrav Krav til utdanningsplan (emnekombinasjon)	Regel	Förkunskapskrav, behörighetsvillkor	Rakenteen säännöt (kuten, sisältyvydet, edeltävydet, edeltävät opinnot)
Cost	Cost	MLO: A cost associated with obtaining access to the learning opportunity (instance)	Kostnad	Pris?	Kostnad	Opetuksen osallistumismaksu
Course	Learning opportunity object: course	Formally specified education or training process in the form of a course	Emne	Undervisningsaktivitet	Kurs	Opintojakso
Course	Learning Opportunity Object: Course	Learning opportunity object that awards credits.				
Course instance	Learning opportunity instance: course	LO offered to students restricted to time, place, pace and form	Undervisnings-enhet, Undervisnings-aktivitet	Lektion?	Kurstillfälle	Opintojakson toteutus
Credit	Credit	Credit, a measure of the extent of the learner action according to a framework like ECTS.	Studiepoeng (=ECTS)	Belastning	Pöäng (ECTS = högskolepoäng)	Opintopiste



ERASMUS+

EMREX Partners



Uddannelses- og
Forskningsministeriet



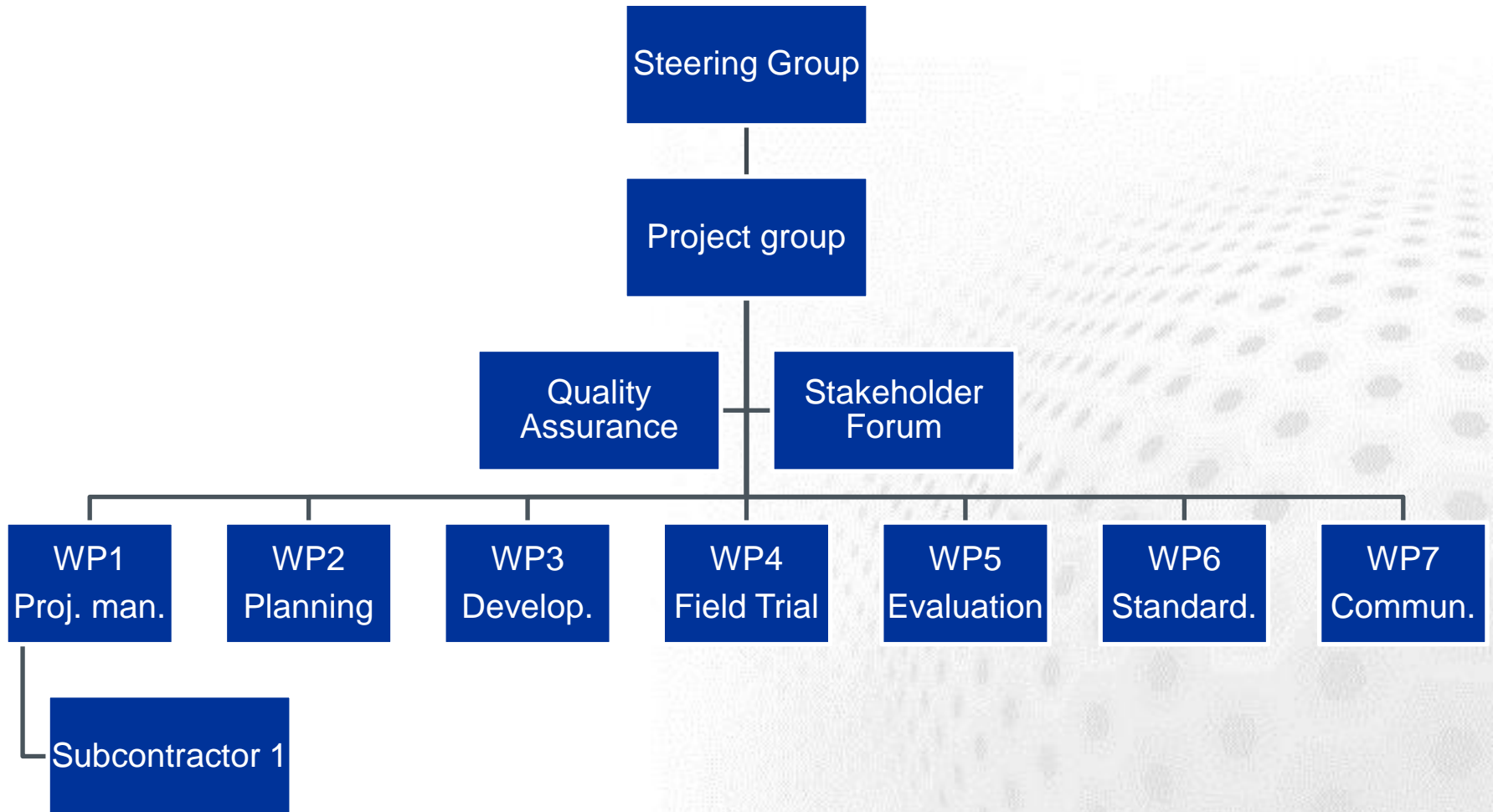
Swedish Council for
Higher Education





ERASMUS+

Organisation





ERASMUS+

EU-funded project – Figures

- Total costs estimated at 1,9 million Euro
- 75% funded by the EU's Erasmus+ program, key action 3: Support for policy reform – Prospective initiatives



Timeline



ERASMUS+

2015

Planning
Specification
Developing

2016

Field Trial
Surveys

2017

Evaluation
Upscaling
Production



ERASMUS+

EMREX Field Trial

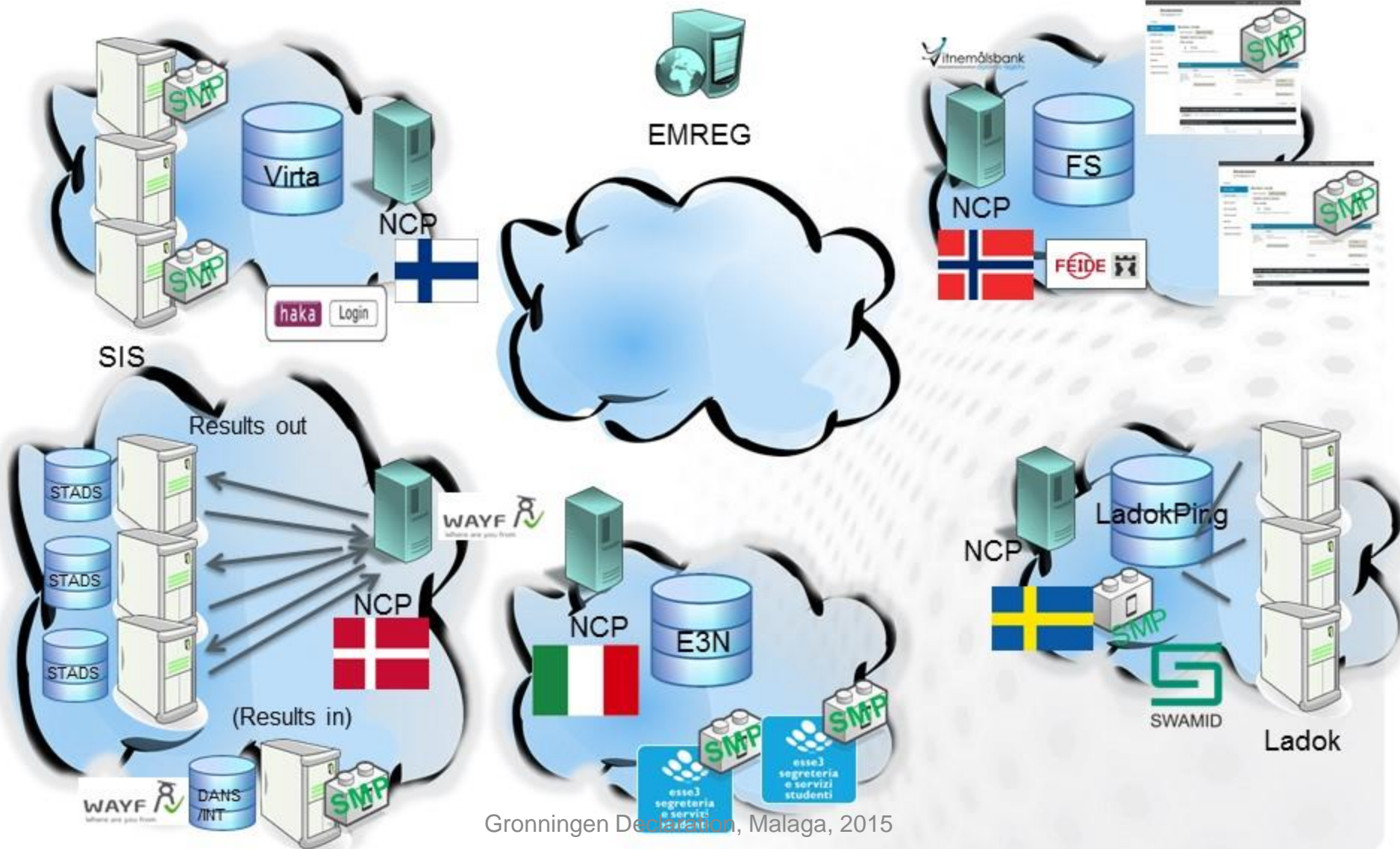
Four nordic countries and Italy – University of Warsaw as evaluator:

- ➊ Working solution, tested with real students
- ➋ Can easily be scaled-up after project
- ➌ To promote higher attainment level to student mobility in higher education
- ➍ To test new ways to enable easier administration of student mobility



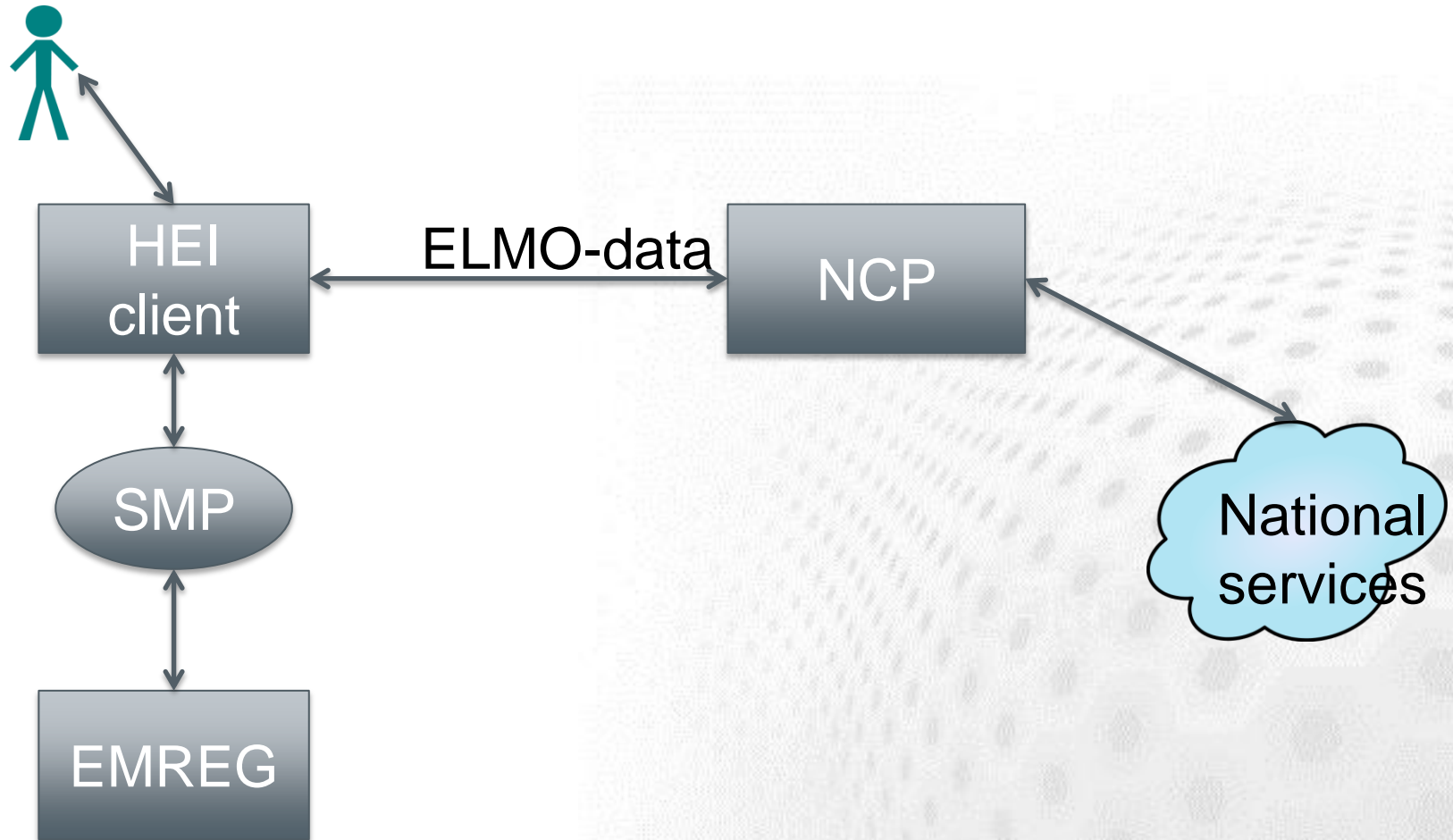
ERASMUS+

EMREX Field Trial Network



Gronningen Dec 14-15, Malaga, 2015

Technical components





ERASMUS+

HEI client

- Initiates the EMREX transfer for the student
- Must implement secure login
- Provide a way to store fetched results in local SIS



ERASMUS+

SMP – Student mobility plugin

- Used by the HEI client to ensure that the transfer is standardized
- A library of helpful functions



ERASMUS+

NCP – National contact point

- Entry point for the EMREX network to that country's data
- Must contain functionality for secure login, result-fetching and transfer



EMREG



ERASMUS+

- Only central component
- Registry of available NCPs with metadata
- Exposed through web services
- Currently hosted in Norway



ERASMUS+

Standards – ELMO

- EMREX uses the ELMO XML format to exchange data
- Metadata for learner opportunities (MLO-AD)
- European Learner Mobility – Achievement Information (EuroLMAI)



ERASMUS+

Security

- Login at both client and NCP
- Enforce HTTPS
- Sign ELMO data. Public key in EMREG
- Validate student



ERASMUS+

Wireframe mock-ups

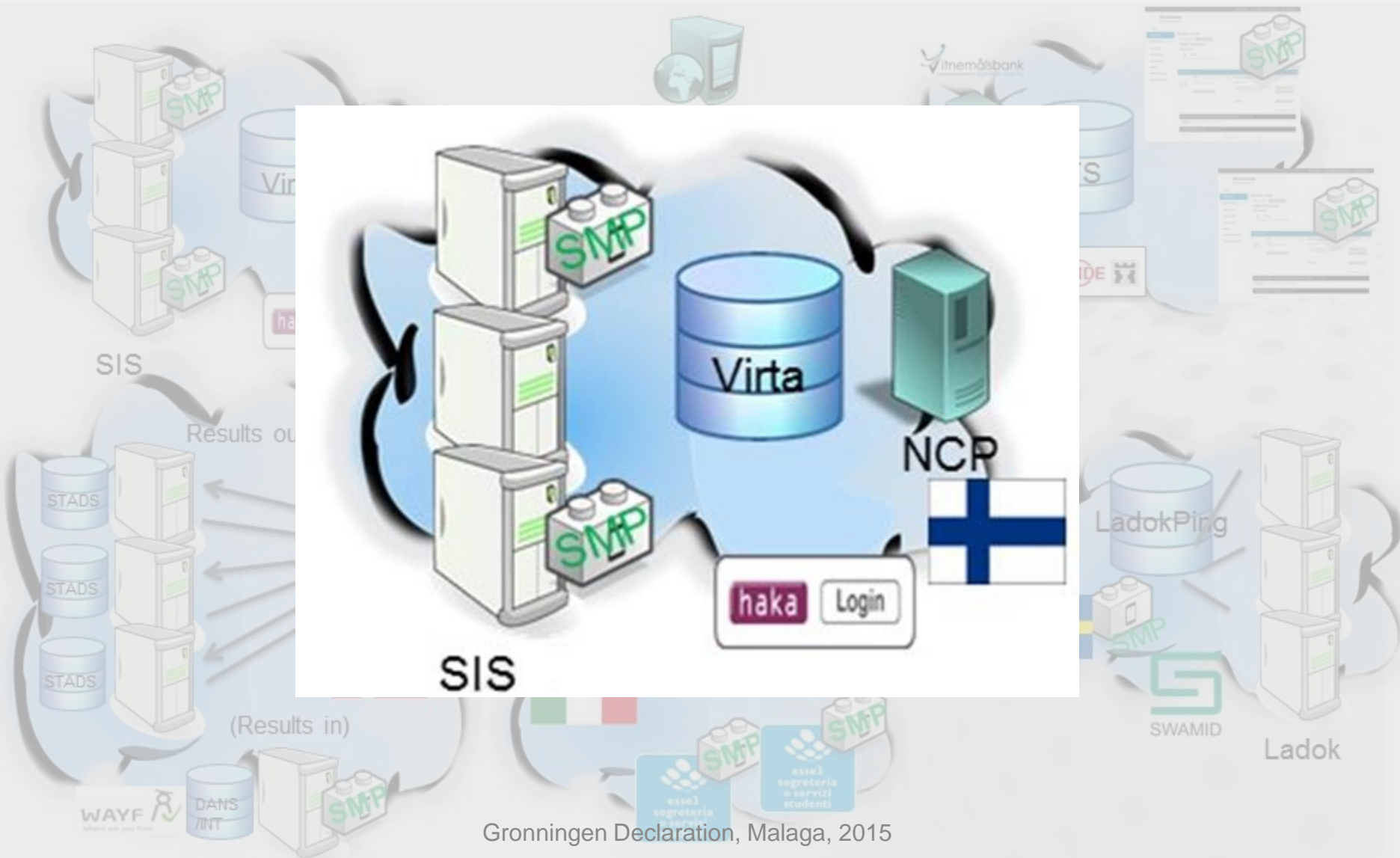
Not supported by IE

<https://moqups.com/lundin.goran@gmail.com/2sWGyfXn/p:a2fa73ae2>



ERASMUS+

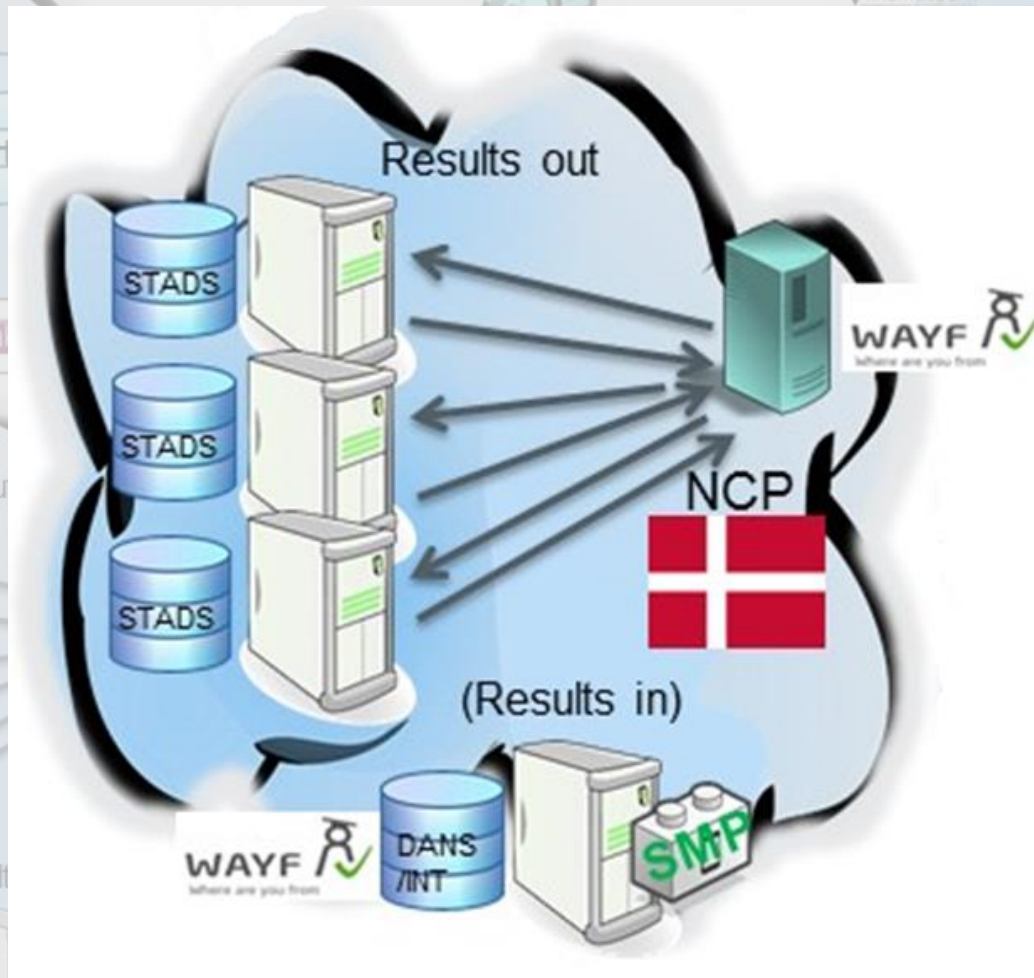
Field Trial Network - Finland





ERASMUS+

Field Trial Network - Denmark





ERASMUS+

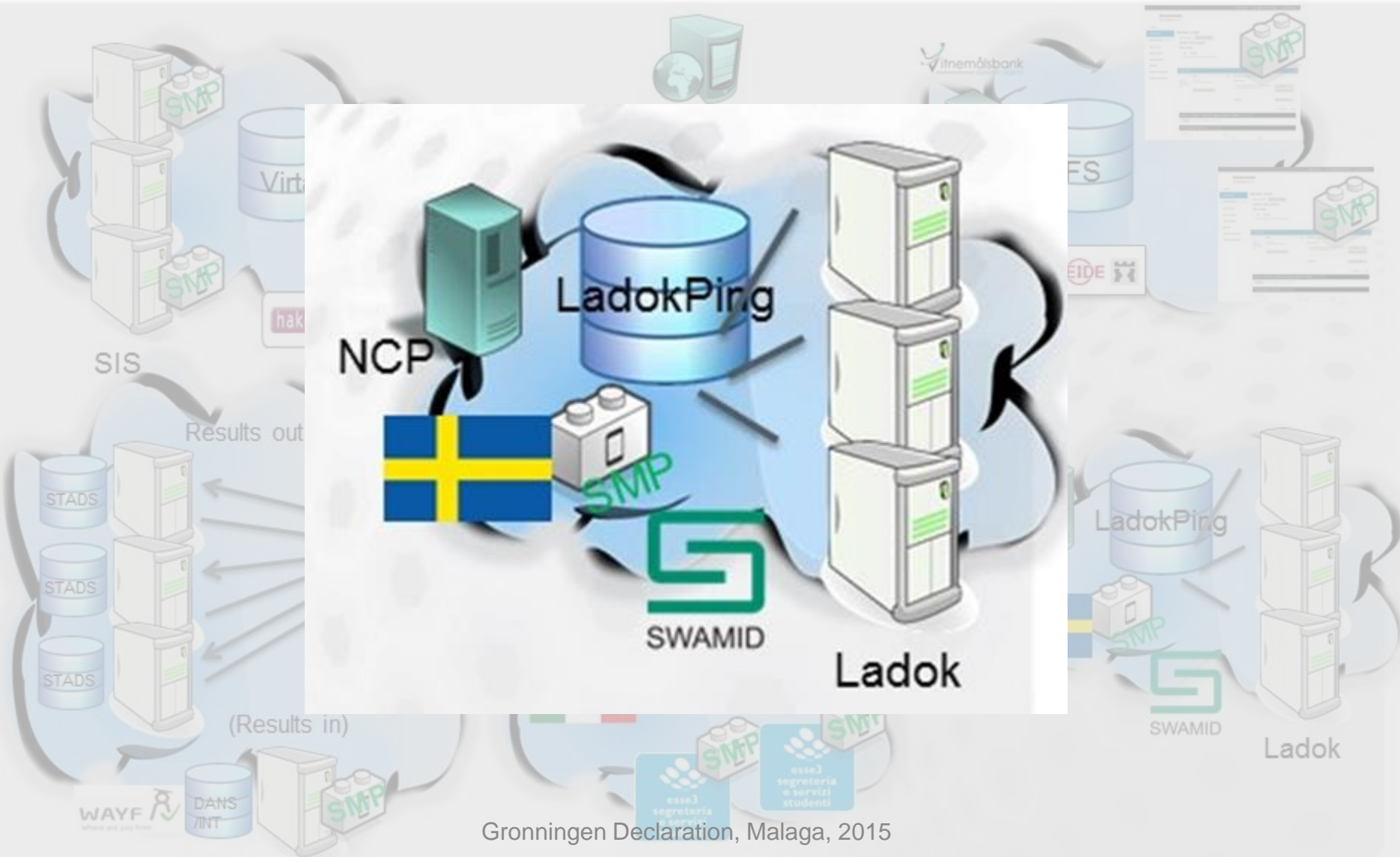
Field Trial Network - Norway





ERASMUS+

Field Trial Network - Sweden





ERASMUS+

Field Trial Network - Italy



Gronningen Declaration, Malaga, 2015



ERASMUS+

Upscaling

- Peer-to-peer communication, so no bottlenecks
- EMREX provides examples of clients and NCPs
- Some local implementation required



ERASMUS+

Future organisation?

- ➊ New steering group to be set down in the end of the project.



Delivering 3 in one stroke

Supporting student mobility



ERASMUS+

- EMREX will be based on common procedures
- EMREX will simplify the exchange of results by making it:
 - Easier
 - Faster
 - Authenticated
 - Secure
 - Initiated by the student



Delivering 3 in one stroke

Automatic recognition



ERASMUS+

Conditions that have to be fulfilled:

- Information about the student must be brought in to the system where it shall be handled
- Information in the form of data
- Standard formats to be used
- Standardized information
- All parties must agree on this information



Delivering 3 in one stroke

Learning mobility statistics



ERASMUS+

- EMREX can provide quality data about the students assessments
- Prevention of doublecounting
- Result:
 - Extended degree of knowledge about recognition practises in EMREX-countries
 - More focus on the need of quality assurance for the proces of recognition
 - Transparency will lead to more uniform processes
 - Equal treatment of the recognition cases



ERASMUS+

Information and contact

- <http://www.emrex.eu>
- Denmark: Anders Bøgebjerg Hansen (abh@ufm.dk)
- Finland: Mats Lindstedt (mats.lindstedt@csc.fi)
- Italy: Stefano Russo (strusso@kion.it)
- Norway: Geir Vangen (g.m.vangen@fsat.no)
- Poland: Janina Mincer-Daszkiewicz
(jmd@mimuw.edu.pl)
- Sweden: Pamela Henriksson
(Pamela.henriksson@gu.se)