



ERASMUS+

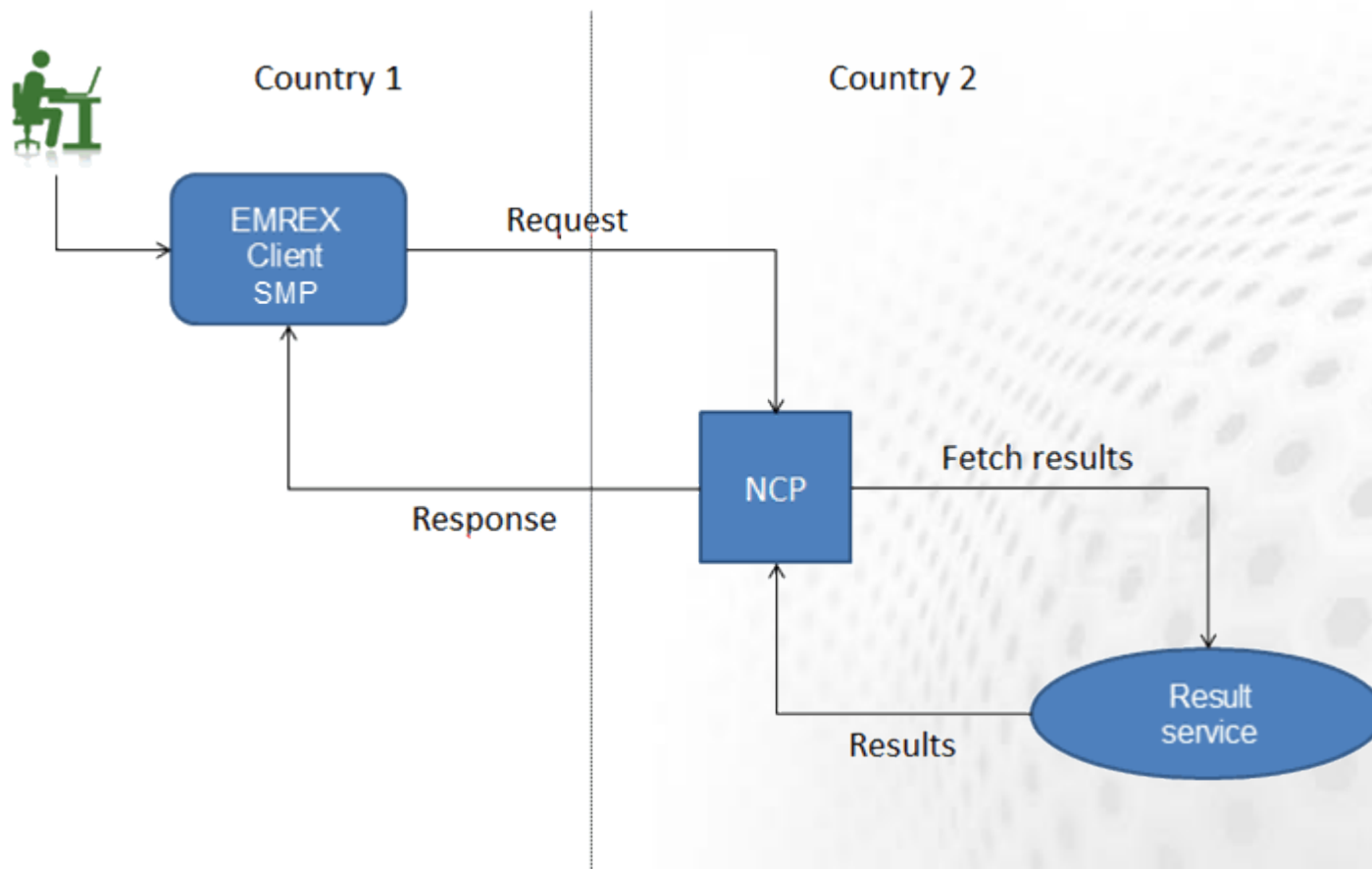
EMREX

The solution



Copenhagen 26.10.2015
Geir Vangen

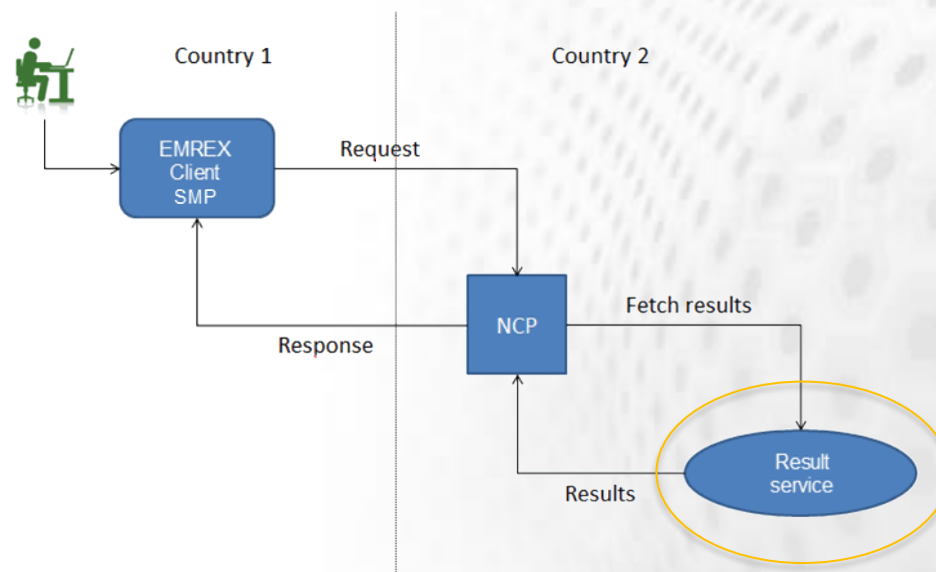
Simple drawing of EMREX



Components of EMREX

– Result service

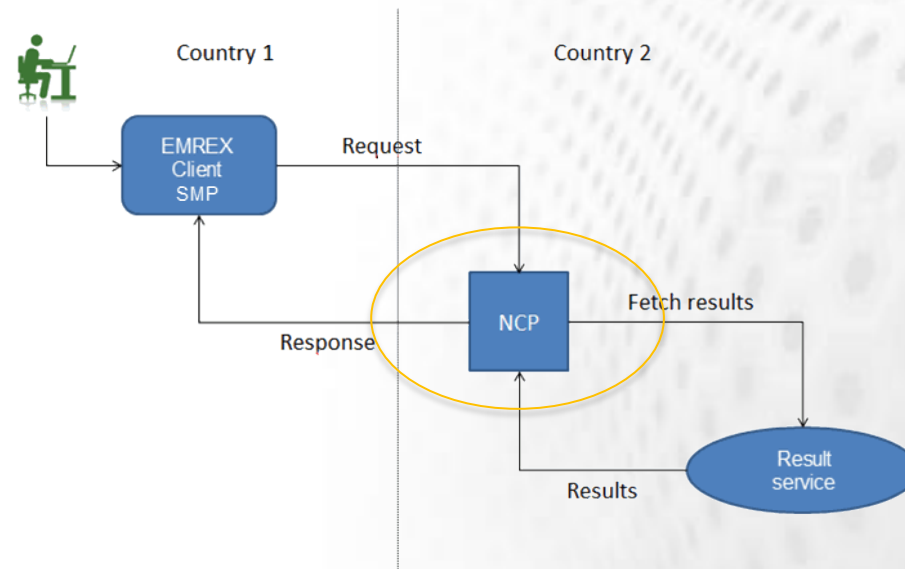
A service that provides result information for a student. Could be connected to a student information system or a national data warehouse.



Components of EMREX

– NCP - National Contact Point

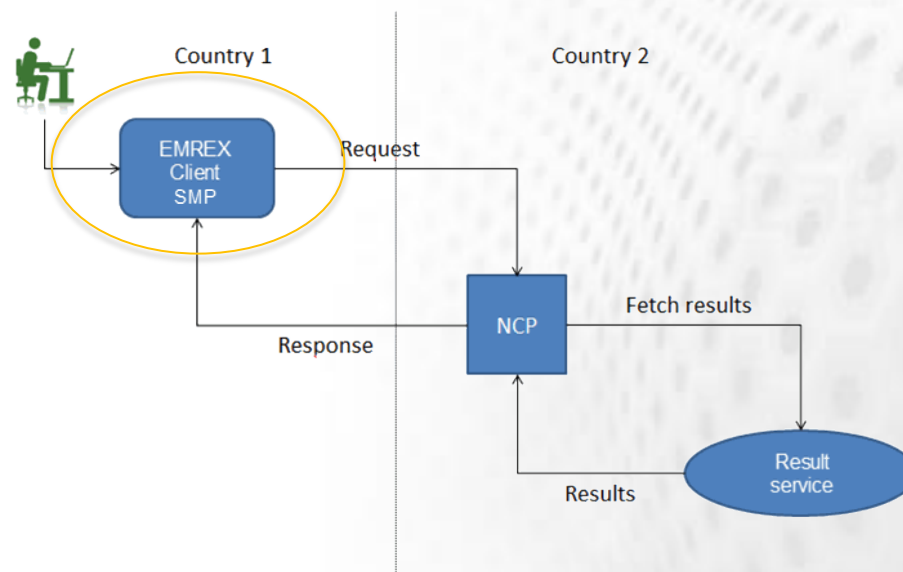
The system providing student data for EMREX. One per country. Collects data from the result service.



Components of EMREX

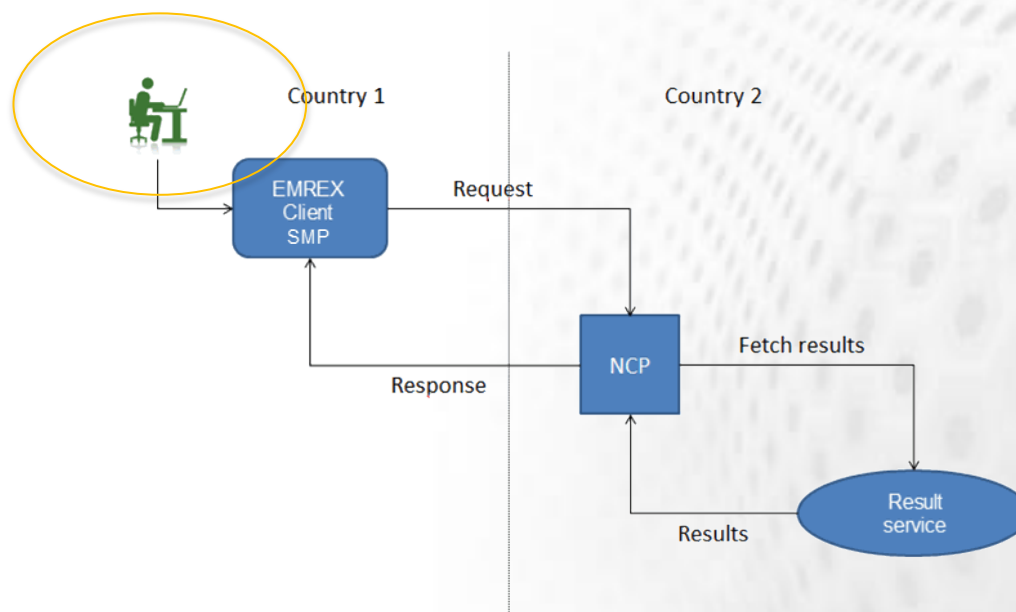
– EMREX Client SMP - Student Mobility Plugin

EMREX client with SMP is the application where the student is asked to deliver result information. The SMP «sends» the student to an NCP for getting data. The client could would in most cases be an application where you apply for admission or recognition. Store data in SIS.

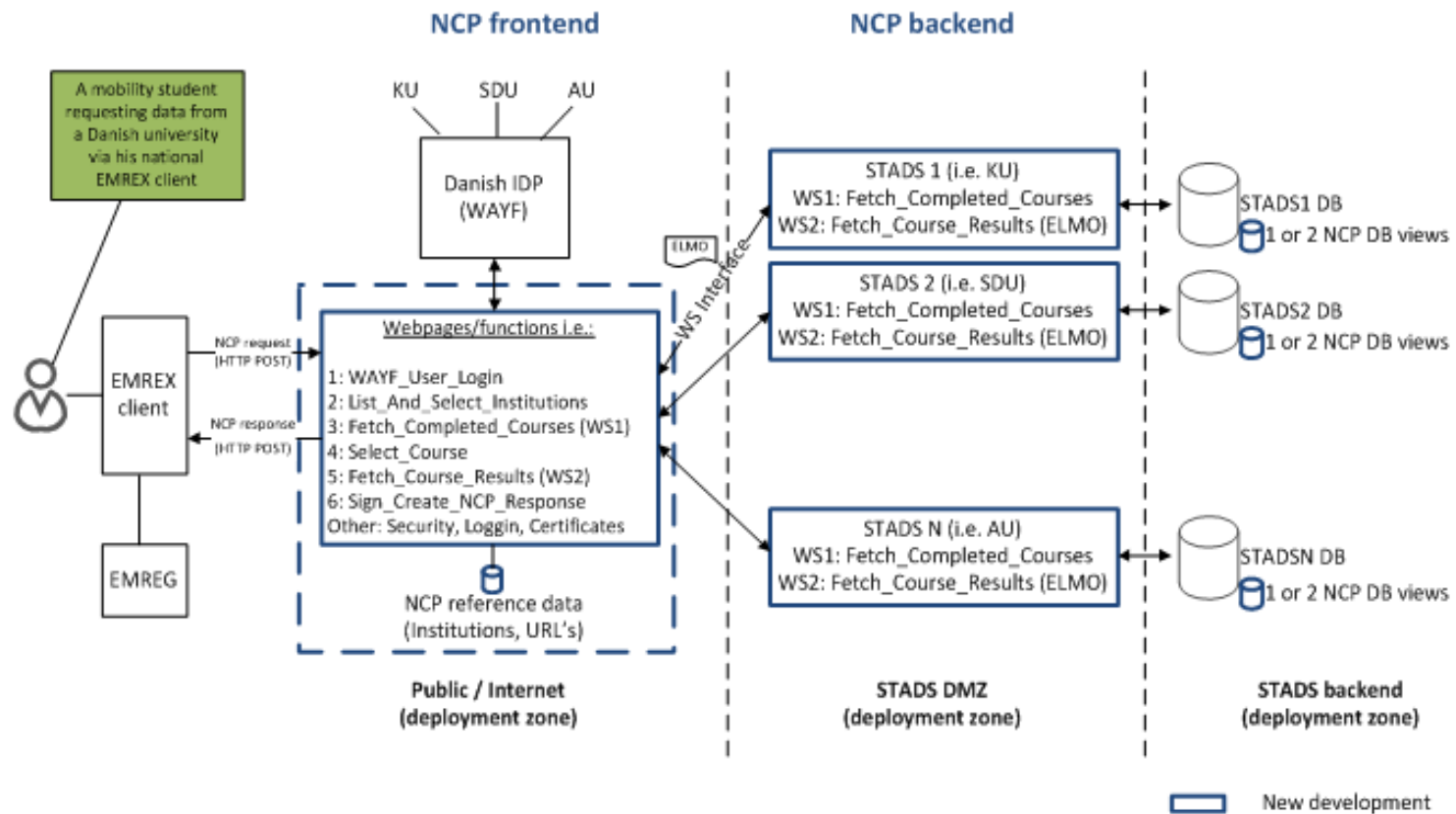


Components of EMREX

- **And then we have the student of course**
The most important part



Not that simple drawing of EMREX





ERASMUS+

	NCP	Authenti- cation	Data source	SMP	EMREX client
Denmark	Y	WAYF	Stads	Y	
Finland	Y	HAKA	Virta	Y	Stand alone
Norway	Y	Feide Id-Porten	FS	Y	FS Studentweb FS Søknadsweb
Sweden	Y	Swamid	Ladok	Y	Stand alone
Italy	Y	Local	ESSE3	Y	ESSE3

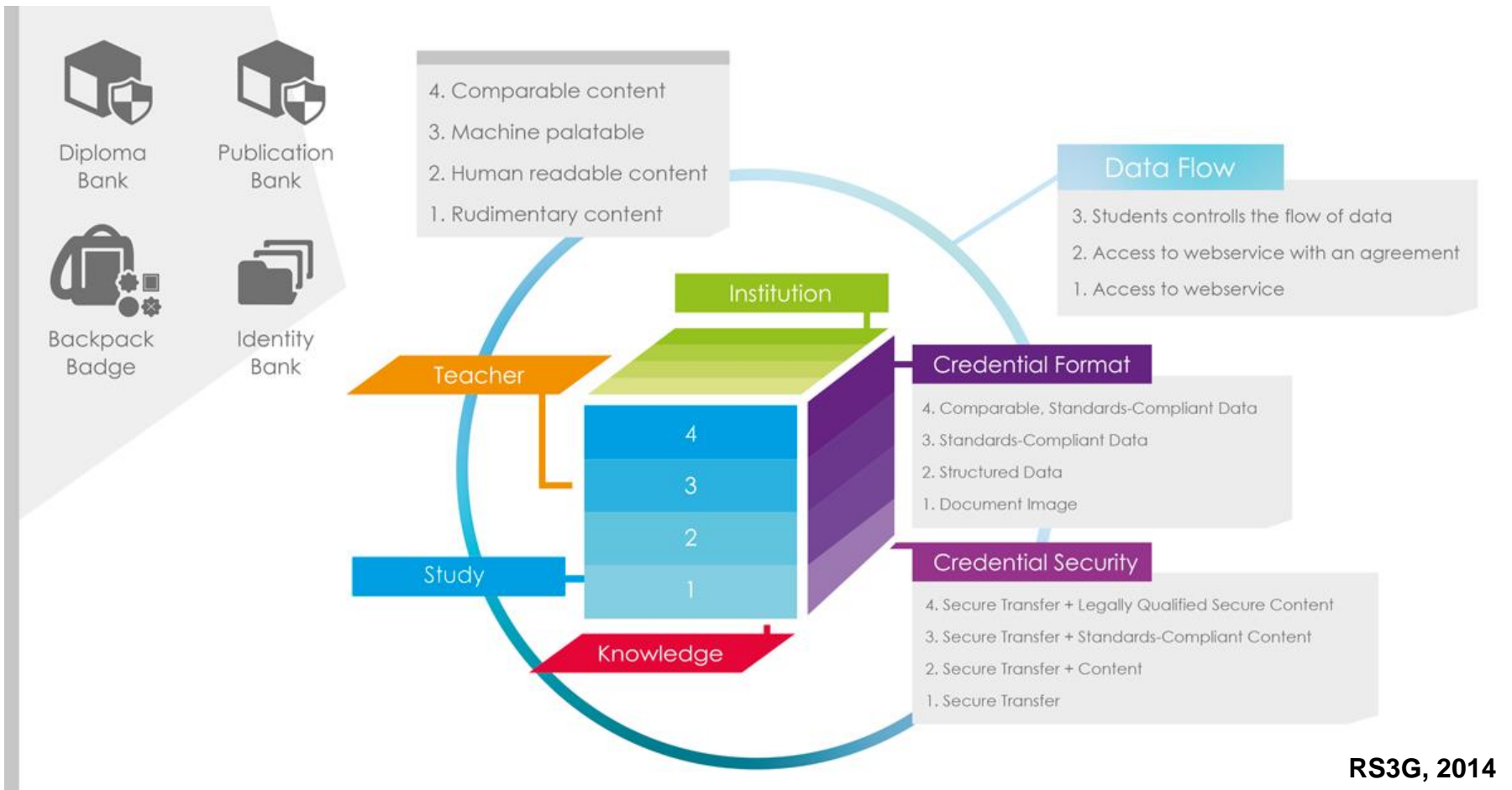


ERASMUS+

Data exchange

- MLO and ELM
 - Metadata for Learning Opportunities
 - European Learner Mobility
- European Norms in 2011
 - MLO Advertising EN15982
 - EuroLM Achievement Information EN15981
- ELMO
 - Format for exchanging data







ERASMUS+

TRUST

- TRUST is of great importance to EMREX. If you don't trust the EMREX network, this system won't work.

- EMREX Network
 - National control. All communication goes through NCP
 - All HEIs delivering data to the network must be approved by and connected to an NCP

- EMREX system
 - Integrity - protected from accidental or unauthorized changes
 - Confidentiality – protected from access by unauthorized parties



ERASMUS+

DEMO

- Demo of EMREX
[Go to demo](#)





ERASMUS+

What you get

- First phase
 - Main information from Transcript of Records and Diplomas, Diploma Supplement
 - Some comparable information like ECTS credits
- Later on
 - More information about the degrees, programmes, courses that is part of the data exchange
 - More comparable information based of international “standards”



ERASMUS+

Ready for trial

	NCP	SMP - Client
Denmark	2016	2016
Finland	November	November
Norway	November	November
Sweden	November	November
Italy	December	December



ERASMUS+

